



GigaVUE Cloud Suite for AWS SecretRegions Configuration Guide

GigaVUE Cloud Suite

Product Version: 5.9.00

Document Version: 1.0

(See Change Notes for document updates.)

Copyright 2020 Gigamon Inc.. All rights reserved.

Information in this document is subject to change without notice. The software described in this document is furnished under a license agreement or nondisclosure agreement. No part of this publication may be reproduced, transcribed, translated into any language, stored in a retrieval system, or transmitted in any form or any means without the written permission of Gigamon Inc..

Trademark Attributions

Copyright © 2020 Gigamon Inc. All rights reserved. Gigamon and the Gigamon logo are trademarks of Gigamon in the United States and/or other countries. Gigamon trademarks can be found at www.gigamon.com/legal-trademarks. All other trademarks are the trademarks of their respective owners.

Gigamon Inc.
3300 Olcott Street
Santa Clara, CA 95054
408.831.4000

Change Notes

When a document is updated, the document version number on the cover page will indicate a new version and will provide a link to this Change Notes table, which will describe the updates.

Product Version	Document Version	Date Updated	Change Notes
5.9.00	1.0	4/3/2020	Original release of this document with 5.9.00 GA.

Contents

GigaVUE Cloud Suite for AWS SecretRegions Configuration Guide	1
Change Notes	3
GigaVUE Cloud Suite for AWS	5
Overview of GigaVUE Cloud Suite for AWS Secret Regions	6
About AWS Secret Regions	6
Set up AWS Secret Region	6
Additional Sources of Information	8
Documentation	8
How to Download PDFs from My Gigamon	11
Documentation Feedback	11
Contact Technical Support	11
Contact Sales	11
Premium Support	12
The Gigamon Community	12

GigaVUE Cloud Suite for AWS

GigaVUE® Fabric Manager (GigaVUE-FM) is a web-based fabric management interface that provides a single pane of glass visibility and management of both the physical and virtual traffic that form the GigaVUE Cloud.

GigaVUE-FM integrates with the Amazon Elastic Cloud Compute (EC2) APIs and deploys the components of the GigaVUE Cloud Suite for AWS in the Virtual Private Cloud (VPC).

The GigaVUE Cloud Suite for AWS consists of the following components:

- GigaVUE-FM
- GigaVUE V Series node
- GigaVUE V Series controller
- GigaVUE G-vTAP controller

GigaVUE-FM is launched by subscribing to the GigaVUE Cloud Suite for AWS in the AWS Marketplace. Once the GigaVUE Cloud Suite for AWS instance is launched, the rest of the Amazon Machine Images (AMIs) residing in the AWS Marketplace are automatically launched from GigaVUE-FM based on the specifications in the GigaVUE-FM interface.

GigaVUE Cloud Suite is available in both the public AWS cloud and in AWS GovCloud, and supports the Bring Your Own License (BYOL) model and the hourly Pay-As-You-Go (PAYG) model that you can avail from the [AWS Marketplace](#).

This guide describes how to deploy the GigaVUE Cloud Suite on the Amazon Web Services (AWS) cloud. For information about installing GigaVUE-FM in your enterprise data center, refer to the "Installation and Upgrade" section in the *GigaVUE-FM User's Guide* available in the [Gigamon Customer Portal](#).

Overview of GigaVUE Cloud Suite for AWS Secret Regions

Commercial Cloud Services (C2S) and Secret Commercial Cloud Services (SC2S) are the secure AWS Secret Regions for Intelligence Community (IC) of U.S. Government. In GigaVUE-FM, a user with appropriate agency name, mission, and role can toggle to an AWS Secret Region (C2S or SC2S) for IC's Cloud environment. Refer to *GigaVUE Cloud Suite for AWS Configuration Guide* for detailed information on regular AWS configuration.

About AWS Secret Regions

There are many security enhancements and features contained in AWS secret regions than a regular AWS cloud service. Following are the key features of AWS secret regions.

- **No outbound internet access**—Users can not access GigaVUE-FM and C2S/SC2S services without a proxy connection.
- **Reduced set of AWS services and/or components**—Secret Regions have limited set of AWS services and resources. While many fundamental AWS services such as EC2 and S3 are available, and many of the managed services like AWS Elastic BeanStalk, AWS EFS, AWS Lambda, AWS CodeDeploy, AWS CodeCommit, etc. are absent.
- **Secured access**—Access to the IC's cloud environment is based on two-way SSL communication through PKI certificates. For the IAM users, access to C2S/SC2S is only through tokens. C2S/SC2S has a built-in CAP module that is placed between the vendor software and the IAM services.
 - For **C2S**, GigaVUE-FM calls CAP for AWS token bypassing the appropriate Agency, Mission, and Role.
 - For **SC2S**, GigaVUE-FM first calls CAP to retrieve the agency, account name, and role name then pass in the appropriate agency, account name, and role.

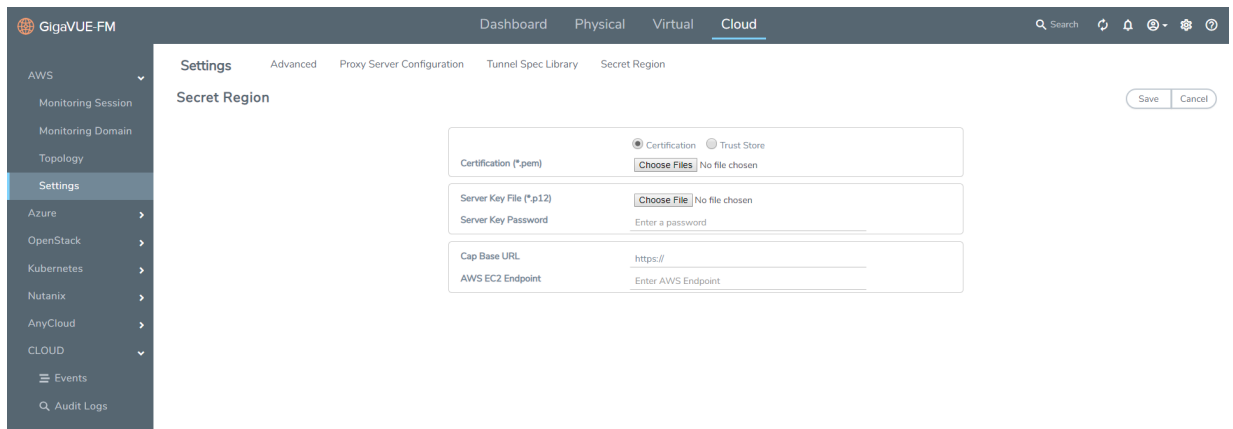
NOTE: The session token is always associated with expiration and GigaVUE-FM needs to renew the session token before expiration.

- **Network differences**—The AWS secret regions utilize service endpoints with different DNS names and requires users to provide the service endpoints.

Set up AWS Secret Region

To set up AWS Secret Region:

1. In GigaVUE-FM, select **Cloud > AWS > Settings**. The Settings page appears.
2. On the **Advanced** tab of the Settings page, click **Edit**.
3. On **Aws secret region** field, select any of the following secret regions.
 - Secret—C2S (Commercial Cloud Services)
 - Top Secret—SC2S (Secret Commercial Cloud Services)
4. Click **Save**. Then the **Secret Regions** tab appears in the Settings page.
5. Click **Secret Region** tab and then click **Edit**.
6. On the Secret Region page, enter or select the values and files as follows.
 - Click **Certification**, and select .pem files for Certification
Or,
Click **Trust Store**, select a .pem file, and enter a password for Trust Store.
 - Select a .p12 file, and enter a password or **Server Key**.
 - Enter **CAP Base URL**, and **AWS EC2 Endpoint**.



7. Click **Save**.

Additional Sources of Information

This appendix provides additional sources of information. Refer to the following sections for details:

- [Documentation](#)
- [Documentation Feedback](#)
- [Contact Technical Support](#)
- [Contact Sales](#)
- [The Gigamon Community](#)

Documentation

The following table provides a list of the additional documentation provided for GigaVUE H Series and TA Series nodes. "*" indicates new documents in this release. "***" indicates documents that are renamed in this release.



NOTE: Release Notes are not included in the online documentation. Registered Customers can download the Release Notes from the Software & Docs page on to [My Gigamon](#). Refer to [How to Download PDFs from My Gigamon](#).



TIP: If you keep all PDFs for a particular release in common folder, you can easily search across the doc set by opening one of the files in Acrobat and choosing **Edit > Advanced Search** from the menu. This opens an interface that allows you to select a directory and search across all PDFs in a folder.

Table 1: Documentation Suite for Gigamon Products

Summary	Document
<ul style="list-style-type: none"> complete doc set for the respective release, minus Release Notes, in a zip file 	All-Documents Zip
<ul style="list-style-type: none"> how to unpack, assemble, rack-mount, connect, and initially configure the respective GigaVUE devices reference information and specifications for the respective GigaVUE devices 	GigaVUE-HC1 Hardware Installation Guide
	GigaVUE-HC2 Hardware Installation Guide
	GigaVUE-HC3 Hardware Installation Guide
	GigaVUE TA Series Hardware Installation Guide
Software Installation and Upgrade Guides	
<ul style="list-style-type: none"> how to install GigaVUE-FM on VMware ESXi, MS Hyper-V, and KVM how to migrate GigaVUE-FM on VMware ESXi, Hardware Appliance, and AWS 	**GigaVUE-FM Installation and Migration Guide
<ul style="list-style-type: none"> how to upgrade the embedded GigaVUE-OS on GigaVUE H Series and GigaVUE TA Series nodes 	GigaVUE-OS Upgrade Guide
Administration Guide	
<ul style="list-style-type: none"> how to administer the GigaVUE-OS and GigaVUE-FM software 	GigaVUE-OS and GigaVUE-FM Administration Guide
Configuration and Monitoring Guides	
<ul style="list-style-type: none"> how to install, deploy, and operate GigaVUE Cloud Suite how to configure GigaSMART operations 	GigaVUE-FM User's Guide
<ul style="list-style-type: none"> how to deploy the GigaVUE Cloud Suite solution in any cloud platform 	GigaVUE Cloud Suite for AnyCloud Configuration Guide

Summary	Document
<ul style="list-style-type: none"> how to configure the GigaVUE Cloud Suite components and set up traffic monitoring sessions for the respective cloud platform 	GigaVUE Cloud Suite for AWS Configuration Guide
	GigaVUE Cloud Suite for AWS QuickStart Guide
	*GigaVUE Cloud Suite for AWS SecretRegions Configuration Guide
	GigaVUE Cloud Suite for Azure Configuration Guide
	GigaVUE Cloud Suite for Kubernetes Configuration Guide
	*GigaVUE Cloud Suite for Nutanix Configuration Guide
	GigaVUE Cloud Suite for OpenStack Configuration Guide
	GigaVUE Cloud Suite for VMware Configuration Guide
Reference Guides	
<ul style="list-style-type: none"> library of GigaVUE-OS CLI (Command Line Interface) commands used to configure and operate GigaVUE H Series and TA Series devices 	GigaVUE-OS-CLI Reference Guide
<ul style="list-style-type: none"> guidelines for the different types of cables used to connect Gigamon devices 	GigaVUE-OS Cabling Quick Reference Guide
<ul style="list-style-type: none"> compatibility information and interoperability requirements for Gigamon devices 	GigaVUE-OS Compatibility and Interoperability Matrix
<ul style="list-style-type: none"> samples uses of the GigaVUE-FM Application Program Interfaces (APIs) <div data-bbox="180 1255 818 1331" style="border: 1px solid black; padding: 5px;"> <p>NOTE: Content will be merged into the GigaVUE-FM User's Guide in a future release.</p> </div>	GigaVUE-FM REST API Getting Started Guide
Release Notes	
<ul style="list-style-type: none"> new features, resolved issues, and known issues in this release important notes regarding installing and upgrading to this release <div data-bbox="180 1585 818 1703" style="border: 1px solid black; padding: 5px;"> <p>NOTE: In 5.7.00, the Release Notes documents combines GigaVUE-OS, GigaVUE-FM, and GigaVUE Cloud Suite into one document.</p> </div>	GigaVUE-OS, GigaVUE-FM, GigaVUE-VM, and GigaVUE Cloud Suite Release Notes

Summary	Document
In-Product Help	
<ul style="list-style-type: none"> how to install, deploy, and operate GigaVUE Cloud Suite. Provided from the GigaVUE Cloud Suite interface. 	GigaVUE-FM Online Help
<ul style="list-style-type: none"> the web-based GUI for the GigaVUE-OS. Provided from the GigaVUE-OS H-VUE interface. 	GigaVUE-OS H-VUE Online Help

NOTE: Registered customers can log in to [My Gigamon](#) to download documentation for specific releases under Software & Documentation Downloads. Refer to [How to Download PDFs from My Gigamon](#).

How to Download PDFs from My Gigamon

To download release-specific PDFs:

1. Log in to [My Gigamon](#)
2. Click on the **Software & Documentation** link.
3. Use the **Product** and **Release** filters to find documentation for the current release. For example, select Product: "GigaVUE-FM" and Release: "5.7," enter "pdf" in the search box, and then click **GO** to view all PDF documentation for GigaVUE-FM 5.7.xx.

Documentation Feedback

To send feedback and report issues in our documentation, complete the short survey at the following link:

<https://www.surveymonkey.com/r/gigamondocumentationfeedback>

Contact Technical Support

See <https://www.gigamon.com/support-and-services/contact-support> for Technical Support hours and contact information. You can also email Technical Support at support@gigamon.com.

Contact Sales

Use the following information to Gigamon channel partner or Gigamon sales representatives.

Telephone: +1.408.831.4025

Sales: inside.sales@gigamon.com

Partners: www.gigamon.com/partners.html

Premium Support

Email Gigamon at inside.sales@gigamon.com for information on purchasing 24x7 Premium Support. Premium Support entitles you to round-the-clock phone support with a dedicated Support Engineer every day of the week.

The Gigamon Community

The [Gigamon Community](#) is a technical site where Gigamon users, partners, security and network professionals and Gigamon employees come together to share knowledge and expertise, ask questions, build their network and learn about best practices for Gigamon products.

Visit the Gigamon Community site to:

- Find knowledge base articles and documentation
- Ask and answer questions and learn best practices from other members.
- Join special-interest groups to have focused collaboration around a technology, use-case, vertical market or beta release
- Take online learning lessons and tutorials to broaden your knowledge of Gigamon products.
- Submit and vote on feature enhancements and share product feedback. (Customers only)
- Open support tickets (Customers only)
- Download the latest product updates and documentation (Customers only)

The Gigamon Community is a great way to get answers fast, learn from experts and collaborate directly with other members around your areas of interest.

Register today at community.gigamon.com

Questions? Contact our Community team at community.gigamon.com